



GETZ BROS. & CO. (SINGAPORE), PTE. LTD.  
GETZ CONTRACTS (S), PTE. LTD.  
62 Sungei Kadut Loop,  
#04-08 (IFC) International Furniture Centre, Singapore 729507  
Tel: 65-6897 8588 | Fax: 65-6473 1028  
Website: [www.getz.com.sg](http://www.getz.com.sg)



# Integrated Ceiling System

Getz Ceiling provides a complete ceiling solution using our own Galaxy Metal Ceiling integrated with Dragon light fitting. Using the same suspension, dimension and colors, truly a complete ceiling system.



## Timber Pattern Series

Cat. No:  
KIV-6538  
1 X 120W PAR 38 E27  
Wall-washer Downlight



## WG Series

Cat. No:  
AI-0100-228T5+MD+2AH  
2 X 28W T5 Louver Type  
Fluorescent Fitting  
c/w 2 Ways Air-Handling



## CertaFlux LED Line

### Indoor | Linear Light System

The CertaFlux LED Line is a new and economic solution consisting of linear white line LED modules with high value and good energy efficiency for replacement for T8 linear fluorescent lamp. These cost effective systems are completed with the EBL drivers, which are optimized for a fast return on investment. The ease of design enables a fast development of luminaire. The CertaFlux LED Line System is a high-voltage solution, the design complies with European Class 1 requirements for indoor lighting applications. The CertaFlux is a smart choice in LED lighting solutions with high efficiency and good reliability. Customers can expect a return on their investment within 1.5 years.

#### Applications:

The Philips CertaFlux LED Line System is ideal for the replacement of T8 fluorescent, especially in the applications troffer, waterproof and battens therefore CertaFlux LED Line Systems can be used in offices, supermarket/hypermarkets and factories

#### Features:

- Lumen levels up to 1550 lm and 2200 lm
- Efficiency level surpassing T8 systems
- High quality white light
- 25,000 hrs system lifetime

#### Benefits:

- Good energy efficiency solution at attractive initial investment
- Good light quality
- A reliable linear LED system
- Smart system with LED module and driver.

#### Product Specification:

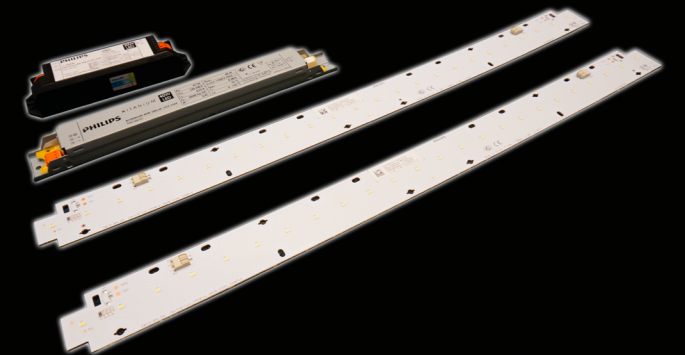
Type	Light output Lm	Module Efficacy lm/W	Color Temp CCT	Color Rendering Index Ra	Color Consistency SDCM	Lumen Depreciation B50L70 hrs	Case Temp Lifetime	Order Code (12NC)
CertaFlux LED Line 2ft 1550Lm 2 1R 840	1550	110	4000	80	5			9290 008 87380
CertaFlux LED Line 2ft 1550Lm 2 1R 865	1550	110	6500	80	5			9290 008 87480
CertaFlux LED Line 2ft 2200Lm 2 1R 840	2200	118	4000	80	5			9290 008 87580
CertaFlux LED Line 2ft 2200Lm 2 1R 865	2200	118	6500	80	5			9290 008 87680

Driver Specification	Power Consumption W	Output Current (mA)	Output Voltage V	Lifetime hrs	Order code (12NC)
LED driver 20W 280mA 69V 230V	20	280	69	25,000	9290 008 87180
LED driver 30W 400mA 69V 230V	30	400	69	25,000	9290 008 53480
LED driver 40W 280mA 132V 230V	40	280	132	25,000	9290 008 87280

Driver Mapping	Number of Module	
	CertaFlux LED Line 2ft 1550Lm	CertaFlux LED Line 2ft 2200Lm
LED driver 20W 280mA 69V 230V		1
LED driver 30W 400mA 69V 230V	2	
LED driver 40W 280mA 132V 230V		2

Driver & Core LED Line Combinations and Applications			
System Components	Total Lumen Output	System Efficiency	Reference Fluo Solution
2x Core LED Line + 20W peak design	2200	108	1x28W or 36W 1x36W
2x Core LED Line + 30W peak design	3100	100	3x14W or 18W 1x36W
2x Core LED Line + 40W peak design	4400	108	4x14W or 18W 2x28W or 36W

PHILIPS





## B0 Series

Cat. No:  
KII-0340-228T5+C  
2 x 28W T5  
Asymmetric & Indirect  
Fluorescent Fitting



## UL Series

Cat. No:  
RI-9490-150+/G  
1 X 150W Metal Halide Diffuser  
Type Downlight



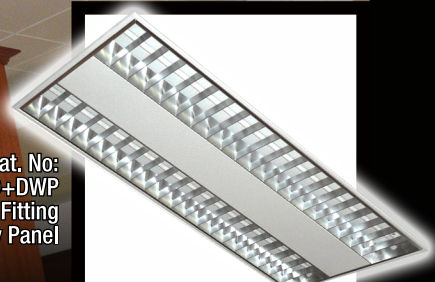
## UT Series

Cat. No:  
RI-1016-218+FG+H  
2 X 18W PCL Diffuser Type  
Downlight



## TG Series

Cat. No:  
AIII-0120-228T5+MD+DWP  
2 X 28W T5 Louver Type Fluorescent Fitting  
c/w Middle Perforated Dummy Panel





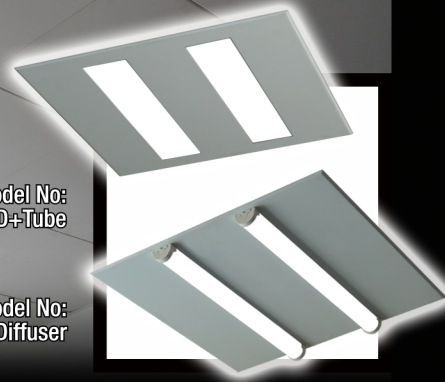


**GALAXY + DRAGON**  
METAL CEILING LIGHT FITTING

## S Series LED Clip-In Ceiling System

Model No:  
S-600+LED+Tube

Model No:  
S-600+LED+Diffuser



**GALAXY + DRAGON**  
METAL CEILING LIGHT FITTING

Getz Integrated Ceiling Solution uses LED module which is far better than traditional T5 and T8 fluorescent tubes in lumen output, life span & energy efficiency. No additional suspension required as our Galaxy Metal Ceiling and the lighting system uses the same runner/grid. A total ceiling solution system that provides functionality as well as aesthetics.



**GETZ SINGAPORE**

### Standard:



# Integrated Ceiling System

## H0 Series

Cat. No:  
KI-0311-228T5  
2 X 28W T5  
Indirect Type Fluorescent Fitting

Cat. No:  
LED-831  
6 X 1W High Power  
LED Downlight



## S Series

Cat. No:  
KI-0330-228T5+FS+F  
2 x 28W T5  
Indirect Type  
Fluorescent Fitting

